



**MVIS**<sup>TM</sup>  
MASONRY VENEER INSTALLATION SYSTEM

**STONEYARD**<sup>®</sup>

# Thin Stone Veneer Installation System by LATICRETE<sup>®</sup>

INTERIOR    EXTERIOR    COMMERCIAL    RESIDENTIAL    INDUSTRIAL    GOVERNMENT



Perfect for All New England Stone Veneer:

Boston Blend<sup>™</sup>

Greenwich Gray<sup>™</sup>

Newport Mist<sup>™</sup>

Vineyard Granite<sup>™</sup>

Oyster Bay<sup>™</sup>

Colonial Tan<sup>™</sup>



# Product Information & Specifications

## LATICRETE® MVIS™ System



Refer to Data Sheet 661.0



### MVIS™ Air & Water Barrier

A single component, load bearing, vapor permeable, fluid applied, waterproofing, crack isolating, air barrier membrane. LATICRETE® MVIS™ Air & Water Barrier produces a seamless, monolithic elastomeric coating and bonds directly to a wide variety of substrates. A vital component of MVIS designed to enhance building longevity, save energy, and increase building occupant comfort. Install Stoneyard.com Thin Veneers in 1 - 2 hours.

- Designed for use as an air and water barrier behind most exterior wall claddings
- Excellent bond strength
- May contribute to overall building energy efficiency
- Easy to clean up with water
- ASTM E 2357, ICC – ES AC212, ICC – ED AC38, Can/ULC S742-11

### Packaging Commercial Unit

5 gallon (18.9 l) pail liquid; 36 units per pallet.

#### APPROXIMATE COVERAGE

Per Commercial Unit	250 ft <sup>2</sup> (23.2 m <sup>2</sup> )
---------------------	--

### MVIS™ Hi-Bond Veneer Mortar

The ultimate polymer-fortified, adhesive mortar for interior and exterior installation of large format adhered masonry veneer, stone, ceramic tile, pavers, or thin brick. MVIS™ Hi-Bond Veneer Mortar mixes easily with water and is formulated to achieve unsurpassed workability and adhesion.



Refer to Data Sheet 246.0

### Packaging

50 lb (22.7 kg) bag  
56 bags per pallet; Grey



#### APPROXIMATE COVERAGE Per 50 lb (22.7 kg) bag

Notched Trowel	Coverage
1/4" x 3/8" (6 mm x 9 mm)	60–70 ft <sup>2</sup> (5.6–6.5 m <sup>2</sup> )
1/2" x 1/2" (12 mm x 12 mm)	40–45 ft <sup>2</sup> (3.7–4.2 m <sup>2</sup> )
Adhered Masonry Veneer Application Method	30–33 ft <sup>2</sup> (2.8–3.1 m <sup>2</sup> )

### MVIS™ Pointing Mortar

A factory prepared, MVIS™ Pointing Mortar is designed to be mixed with water. Formulated from a blend of high strength portland cement, graded aggregates, and color-fast pigments. Provides a joint that is dense, hard, and durable.



Refer to Data Sheet 228.0

### Color

Natural Gray

### Packaging

50 lb (22.7 kg) bag  
56 bags per pallet

#### APPROXIMATE COVERAGE

700–750 linear ft (213–229 linear m) with  
3/8" wide by 1/4" (9 mm x 6 mm) deep joint

# Thin Veneer Installation Instructions for the LATICRETE® MVIS™ System

This guide provides a basic overview of materials and installation guidelines for your Stoneyard.com project. The following guidelines do not encompass all project conditions, nor do they replace general installation knowledge. For more assistance on designing with thin veneers, visit [www.stoneyard.com](http://www.stoneyard.com).

For more information on LATICRETE® installation materials, visit [www.laticrete.com/mvis](http://www.laticrete.com/mvis).

## Trimming and Prep

Perhaps the most efficient method for trimming thin veneer is through the use of a 4" (1 cm) angle grinder equipped with a diamond blade (figure A). Cuts made at an angle from the back (sawn) side at 1/2" (12 mm) depth will allow the stone to be "snapped" with a small hammer along the cut line, leaving a natural edge on the front side. Ensure that units are clean of laitance, loose concrete, and any film that could impede bond.

## Substrate Prep

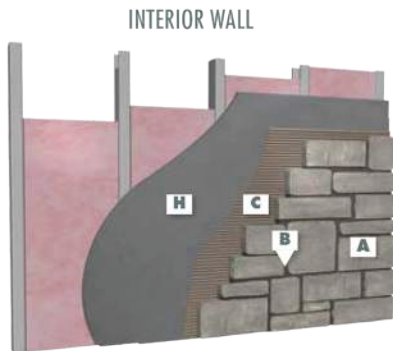
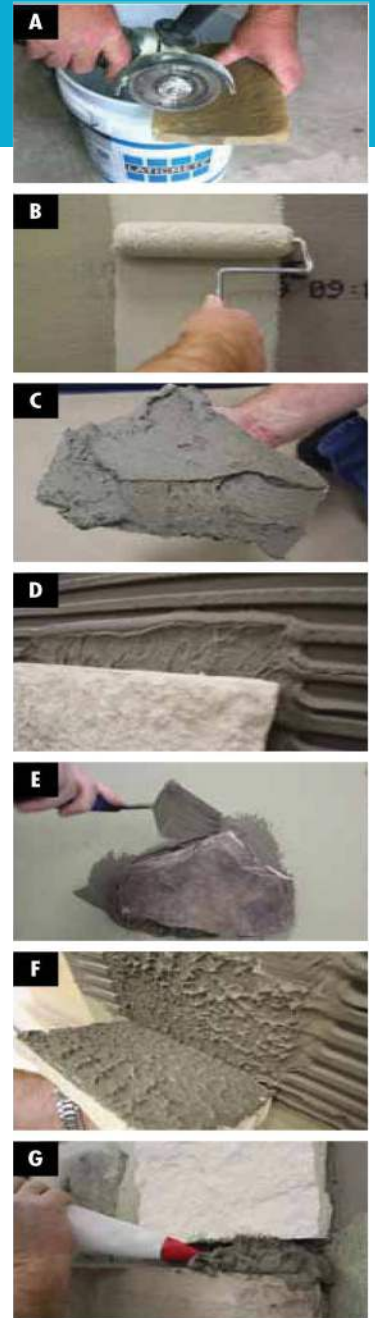
For moisture and air filtration protection, coat the approved substrate with LATICRETE® Air & Water Barrier. First, verify that the substrate is properly prepared and fully cured. Apply the first coat at 15 - 22 mils and allow to fully cure (figure B). Apply a second coat. LATICRETE® Air & Water Barrier will go from a light sage green to a dark olive green when fully cured. Seal all penetrations, including mechanical anchors, brick ties, furring strips, finish cladding supports, and other penetrations, with LATICRETE® Air & Water Barrier.

## Setting

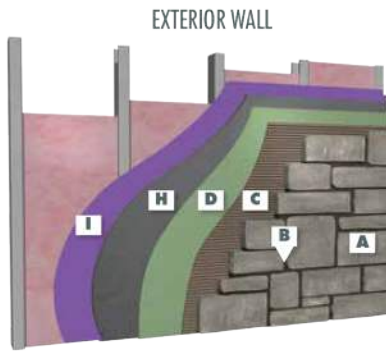
Using a flat trowel, apply a thin coat of LATICRETE Masonry Veneer Mortar to cover entire back of the veneer units (figure C). Spread additional mortar onto the back of the skim coated veneer sufficient to completely fill the space between the veneer and the substrate. Press the mortar covered back of the veneer against the substrate at the desired final position. Slide the unit roughly 1" (25 mm) diagonally while maintaining even pressure (figure D). Take care to keep the joints between the stones consistent and to stagger the vertical joints. Remove excess mortar from the joints prior to setting the next piece (figure E). Periodically pull a piece of stone off the wall to ensure that there is 100% coverage of the mortar between the stone and the substrate (figure F).

## Pointing Mortar

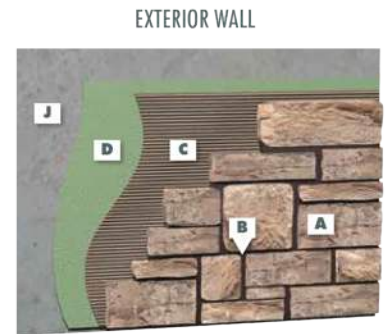
Dampen the stone surface with water. After all of stones have been set, LATICRETE Masonry Pointing Mortar can be applied to the joints (figure G) via a grout bag or pointing trowel. Work your way through the field from bottom to top, forcing the mortar into the joints or any voids that may exist. Note that joint treatments vary by region and individual preference. Take into account the joint mortar depth required by your specific job as you work your way through the field. If any mortar lands on the face(s) of the stone during the course of installation, allow it to dry slightly and then brush or sponge off any residue. When the mortar becomes firm to thumbprint hardness (10 - 60 minutes, depending on climate and temperature), trowel, rake, and/or brush to the desired finish. Finish with a brush or whisk broom.



Framed wall with cement backer board substrate



Framed wall with exterior rated sheathing – cement backer board substrate



Concrete wall – Direct adhered with fluid applied MVIS™ Air & Water Barrier

## DETAIL LEGEND

**A** Adhered Masonry Veneer   **B** Pointing Mortar   **C** Hi-Bond Veneer Mortar   **D** Air & Water Barrier   **H** Cement backer board (exterior grade)   **I** Exterior rated sheathing   **J** Concrete or masonry

Technical Support  
LATICRETE International, Inc.  
[www.laticrete.com/mvis](http://www.laticrete.com/mvis)  
800.243.4788

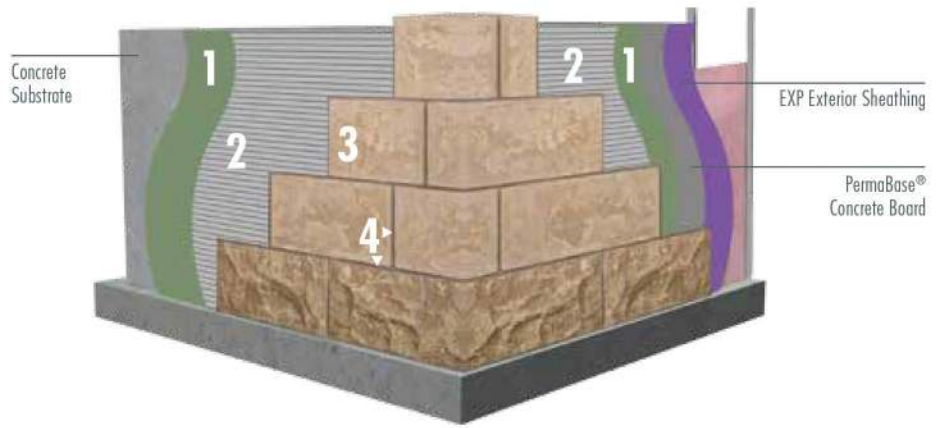


STONEYARD®  
[www.stoneyard.com/mvis](http://www.stoneyard.com/mvis)  
800.231.2200



# THE LATICRETE ADVANTAGE

- 1** MVIS™ Air & Water Barrier
- 2** MVIS Veneer Mortar
- 3** Adhered Veneer
- 4** MVIS Pointing Mortar



## THE CHALLENGE

The explosive increase in popularity of adhered masonry veneer facades has created a need for higher performance, factory produced installation materials to ensure consistently high quality installations.

Up to now, the installation of adhered masonry veneers has required the use of site-mixed Type S or Type N mortars – materials that are subject to large variations in consistency, quality and performance and which also limit the installation technique to that of traditional masonry.

## THE SOLUTION

Realizing these needs, and based on our globally proven technology, LATICRETE has developed an installation system that provides a permanent, high strength installation that is freeze/thaw stable and protected from water intrusion.

Architectural details are offered at [www.laticrete.com/MVIS](http://www.laticrete.com/MVIS) to help design professionals, contractors and installers understand the range of possible applications – and appropriate products and techniques which will assure long-term performance on projects of all types.

## LATICRETE Offers The Best Warranties In The Industry

### LATICRETE 25 YEAR SYSTEM WARRANTY

See Data Sheet 025.0 for complete warranty information.

APPLICATION	PRODUCTS
<b>Air &amp; Water Barrier System</b>	MVIS™ Air & Water Barrier MVIS Transition Tape MVIS Flexible Sealing Tape MVIS Transition Tape Primer
<b>Thick Bed Method</b>	MVIS Premium Mortar Bed
<b>Adhesive Method/Thin Bed method</b>	MVIS Hi-Bond Veneer Mortar (regular and rapid version) MVIS Veneer Mortar MVIS Thin Brick Mortar
<b>Pointing/Grouting</b>	MVIS Premium Pointing Mortar MVIS Pointing Mortar
<b>Sealant†</b>	MVIS Silicone Sealant



† Use of suitable flexible sealant is required per Tile Council of America Detail EJ171 for use in expansion joints, coves, corners, changes in plane and other joints, or wherever tile or stone abuts dissimilar materials or restraining surfaces.

### LATICRETE 15 YEAR SYSTEM WARRANTY

For Steel or Wood Framed Exterior Facades

See Data Sheet 230.15 for complete warranty information.

APPLICATION	PRODUCTS
<b>Air &amp; Water Barrier System</b>	MVIS™ Air & Water Barrier MVIS Transition Tape MVIS Flexible Sealing Tape MVIS Transition Tape Primer
<b>Thick Bed</b>	MVIS Premium Mortar Bed
<b>Adhesive Method/Thin Bed method</b>	MVIS Hi-Bond Veneer Mortar (regular & rapid version) MVIS Veneer Mortar MVIS Thin Brick Mortar
<b>Pointing/Grouting</b>	MVIS Premium Pointing Mortar MVIS Pointing Mortar
<b>Sealant†</b>	MVIS Silicone Sealant LATASIL™ 9118 Primer



#### NOTES:

\* See Data Sheet 230.15 for complete warranty information.

\*\* See Data Sheet 025.0 for complete warranty information.

- UL GREENGUARD Gold Certified
- LOW VOC
- LEED COMPLIANT



Many companies might say their products are low VOC; only one independently certifies it – LATICRETE.

- Third party UL GREENGUARD Gold certification to meet stringent indoor air quality standards
- Product certifications readily available at [www.laticrete.com/green](http://www.laticrete.com/green)
- Helps contribute to LEED certification

### Technical Questions & Support:

LATICRETE International, Inc.  
One LATICRETE Park North  
Bethany, CT 06524-3423 USA  
1.800.243.4788  
+1.203.393.0010

[www.laticrete.com/mvis](http://www.laticrete.com/mvis)

STONEYARD®  
2 Spectacle Pond Road  
Littleton, MA 01460 USA  
1.800.231.2200  
+1.978.742.9800

[www.stoneyard.com/mvis](http://www.stoneyard.com/mvis)