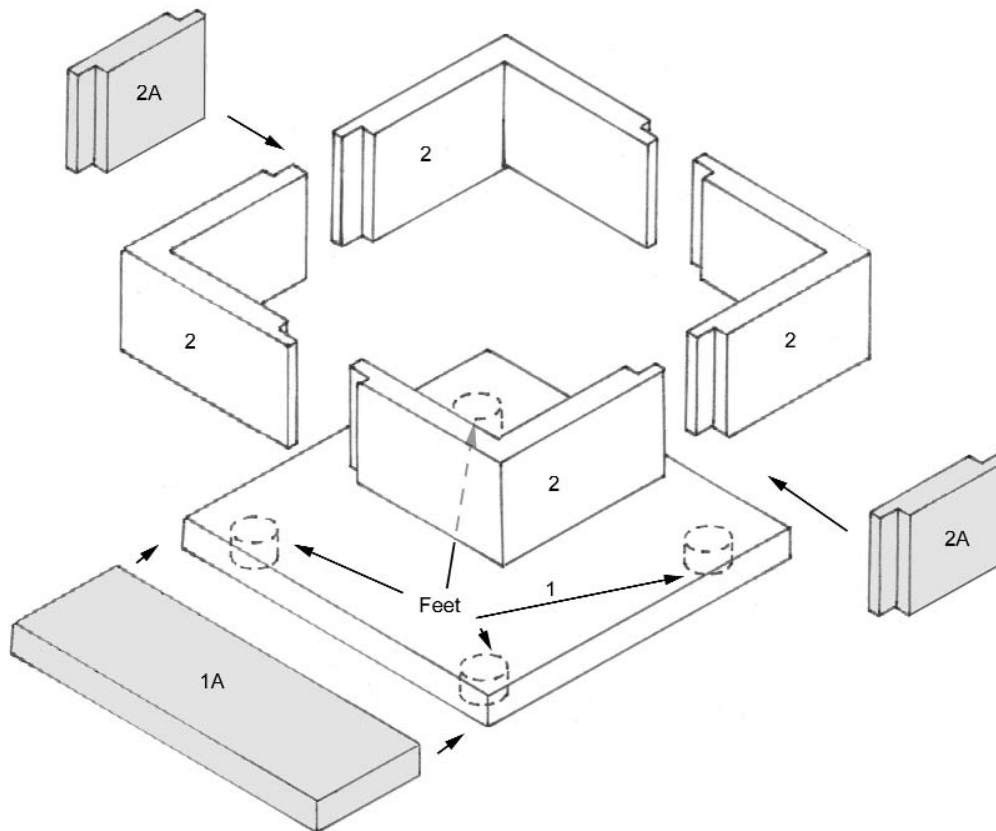


# Square Fire Pit & Optional Extension Kit

## Construction Diagram



**Fire Pit Components:** #1 Baseplate, #2 Sidewall (4)  
**Extension Kit Components:** #1A Baseplate Extension, #2A Sidewall Extension (2)

**Dimensions:** 15" Tall (without feet), 17 1/2" Tall (with feet),  
 36" x 36" Inside Width, 42" x 42" Outside Width,  
 Extension kits available to add 12" Width in one direction

**Reversible Base:** Baseplate has 2 1/2" t feet that may be used to raise unit off floor to create air space below fire pit and allow portability of unit. Baseplate may be reversed to place feet inside pit when placing unit directly on floor.

**Weight:** Fire Pit 650 lbs. (approximate) Extension Kit: 100 lbs (approximate)

**Notes:** Firebrick is optional, but is not required for Stone Age fire pits.  
 Fire pit can burn wood, or can be configured for natural or LP gas operation.  
 Place weep holes at inner floor level for proper water drainage.  
 Extension Kit cannot be used when raising fire pit off floor.

Unit should not be fired for 21 days after completion, to allow full curing of mortar.

**Finishing Specs:** 20 SF of surface and 14 LF of Coping. Extension kits add 3 SF of Surface and 2 LF of coping, per kit.